



压缩机生产许可证: XK06-110-00162
压力容器制造许可证: RZZ川-027-06
压力管道安装许可证: TS3851046-2010



空气压缩机
CNG 压缩机
AIR COMPRESSOR
CNG COMPRESSOR



自贡山川气体压缩机有限公司
ZIGONG SHANCHUAN GAS COMPRESSOR CO., LTD.

中国 · 四川
CHINA SICHUAN



SHANCHUAN

網易暖通
1688.com





Certificate of honor

自贡市 网络易暖通



权威认证 值得信赖
追求完美 创造卓越

企业简介

BRIEF INTRODUCTION

自贡山川气体压缩机有限公司，地处恐龙之乡——四川省自贡市，东距重庆210公里，西距成都200公里，南距宜宾大峡谷温泉110公里，比邻旅游胜地——九寨沟、峨眉山、蜀南竹海、乐山大佛及都江堰，境内交通发达，内昆铁路穿境而过，高速公路直达重庆、成都和昆明。公司占地面积6.9万平方米，大型生产设备280余台，固定资产8500万元，员工376名，其中，中高级职称工程师58名。

自贡山川气体压缩机有限公司是由专业生产气体压缩机的国有骨干企业自贡空压机总厂改制而成，始建于20世纪50年代，有五十多年悠久的压缩机生产历史，是我国最早生产空压机的厂家之一，拥有国内一流和国际先进的生产技术及驰誉中外的“山川”品牌。

公司依靠一流的技术力量和雄厚的经济实力，拥有开发、设计、制造、检测气体压缩机和D类压力容器的能力，所制造的VF-3/7型空压机获机电部优质产品名称，L-10/7、VF-6/7型空压机获四川省优质节能产品称号，VWJ-10/7型无基础空压机获98年国家级新产品称号，公司新研发的L系列主机自然冷却式CNG压缩机，采用了国际先进的径向平面浮动活塞、氟橡胶高压密封圈、主机自然冷却，风、水冷兼顾等先进技术，在四川省科学技术厅的科技成果鉴定会上，被专家组评为该产品的技术处于国内领先水平。

公司有完善的质量保证体系，并通过ISO9001: 2000国际质量认证，严格遵循“从严要求、持续改进，追求卓越、取信顾客”的原则，及优质的售后服务，长期受到用户的信任和好评。产品在国家大型项目三峡工程、成昆、成渝、内昆、渝怀铁路工程及机械、矿山、冶金、化工、食品、建筑、电力、交通、能源等行业广泛使用，销售遍及全国各省市自治区，远销40多个国家和地区。

“专业打造精品 科技铸就辉煌。”我们凭着强大的科技和雄厚的资金实力，制造出更加完美的产品，奉献给所有的顾客并满足用户的需求，本着“讲信誉、守承诺”的原则，与海内外朋友客商真诚携手，共同打造“山川”品牌。

Zigong Sanchuan Air Compressor Co.,Ltd is located in -inosaur Village- in Zigong,Sichuan Provance, east to Chongqing 210Kilometers, west to Chengdu 200 Kilometers, south to hotspring in the grand canyon in Yibing 110 Kilometers, neighbouring to the tour famous scenic spot Jiuzhaigou, Emei mountain, East shu bam boo sea, Leshan big Buddha and Dujiang Weir, the traffic in churchyard is very convenient, Neikun railway passes through the city, highway arrive directly to Chongqing, Chengdu and Kunming.

The company has 69000 m², 280 sets of big produce equipments, 85 million of fixed assets, thereinto, 376 staff,58 high and middle engineers.

Zigong Sanchuan air compressor Co., Ltd is key enterprises of the series of air compressors from the Zigong General Air compressor factory, establishing in 50 age 20 century, there are more 50 years producing air compress or history, which is one of the earliest manufacturers or air compressor, and holding the chinese first class and in ternational advance production and technology and famous brand “SANCHUAN” in the china and foreign countries.

The company depend on the first class technology capacity and abundant economy strength, hold the capacity of the invention, design, manufacture, measure of air compressors and D type Pressure Vessels, VF-3/7 type air compressor has obtained “High Grade Product” from the Electrical Board, L-10/7 and VF-6/7 type have obtained “High Grade Saving energy Products” from Sichuan Province, VWJ-10/7 type no-base air compressor has obtained 98' national new product, the company's new L series mainframe nature cooling CNG compressors have adopted international advance radial plane float plunger, high-pressure airproof FI-rubber loop, e tc advance technology, and are judged to international advance technology in the science and technology authentication meeting by Sichuan Technology Office.

The company has perfect Quality Guarantee system, ISO9001: 2000 international system, and strictly follow the principle “strict request, continuance improvement, perfect hankering, faith to Clients”, and good after-service, we are trusted and appreciated by users for a long time. Products are used widely to many national big projects, for example: Sanxia Project, Chengkun, Chengyu, Neikun, Yuhuai railway projects and mechanism, mine, metallurgy, chemical industry, food, construction, electric power, traffic, etc. and sold all over the country, traded to 40countries and areas. The extract is from speciality, science and technology makes the extract” we are basing on the strong science and technology and abundant capital capacity, and manufacturing the best products, offering and satisfying all clients' needs. we are looking forward to cooperating with all friends in the world hand by hand to build “SANCHUAN” brand by credit and promise.

空气压缩机主要产品参数一览表

名称	序号	型号	冷却方式	排气量 (m ³ /min)	额定排压 (Mpa)	轴功率 (< kW)	压缩机转速 (r/min)	驱 动 机 型 号	功率(kW)	主机外形尺寸 (L×W×H)	主机重量 (kg)
固定式空气压缩机	1	V-3/7	水冷	3	0.7	17.5	970	Y200L1-6	18.5	1845×1330×1100	1080
	2	VF-3/7	风冷	3	0.7	18	970	Y200L1-6	18.5	2170×1330×1230	1100
	3	ZW-3/7	水冷	3	0.7	18	730	Y225S-8	18.5	1084×535×1410	980
	4	V-6/7	水冷	6	0.7	35	980	Y250M-6	37	1800×1400×1300	1800
	5	VF-6/7	风冷	6	0.7	36	980	Y250M-6	37	2270×1230×1200	1600
	6	ZW-6/7	水冷	6	0.7	36	740	Y280S-8	37	1050×656×1560	1600
	7	L-10/7	水冷	10	0.7	51.5	980	Y280M-6	55	2050×1910×1500	1500
	8	LW-10/7-a	水冷	10	0.7	56	740	Y280M ₂ -8	65	2950×1910×1800	1500
	9	VWJ-10/7	水冷	10	0.7	52.5	980	YKY-55-6	55	1540×1762×1520	1500
	10	WF-12/7	风冷	12	0.7	74	980	Y280S-6	75	3600×1520×1350	2800
	11	L-13.5/7-a	水冷	13.5	0.7	73	980	Y280S-6	75	1970×2450×1600	1650
	12	L-14/7	水冷	14	0.7	72	980	Y280S-6	75	1550×855×1300	1300
	13	LWJ-14/7	水冷	14	0.7	72	980	YW75-6/560	75	2130×1220×1500	1860
	14	L-20/7-a1	水冷	20	0.7	103	980	Y315S-6	110	2385×2510×1700	2300
	15	LWJ-20/7	水冷	20	0.7	102	980	YW110-6/560	110	2385×1525×2300	1950
	16	LW-20/7	水冷	20	0.7	110	400	Y315M2-8	132	1400×1700×2100	2800
	17	LWJ-22/7	水冷	20	0.7	107	980	YW110-6/560	110	2385×1525×2300	1950
	18	L-40/2.5	水冷	40	0.25	122	400	315M2-8	132	3600×2200×2640	2515
	19	L-40/7	水冷	40	0.7	220	980	Y355L-6	250	3500×2700×1800	2800
移动式空气压缩机	20	VF-3/7-C	风冷	3	0.7	19	1000	495K2	26.5	2375×1200×1800	1243
	21	VY-3/8-d	风冷	3	0.8	19.2	970	Y200L2-6	45	2900×1900×1850	2500
	22	VY-3/8-c	风冷	3	0.8	19.2	1000	495K2	26.5	2900×1900×1850	2250
	23	VY-6/8-c	风冷	6	0.8	37	1225	4135k	48.5	3000×1800×2000	3400
	24	VY-6/8-d1	风冷	6	0.8	37	980	Y280S-6	45	2900×1900×2100	2500
	25	2WCF-6/7	风冷	6	0.7	37	1225	4135K	48.5	3400×1540×1680	2850
	26	VY-9/7-d	风冷	9	0.7	53	980	Y250M-6	55	2650×1800×2000	2500
	27	VY-9/7-C3	风冷	9	0.7	56	1330	4135AK-4	65	3300×1950×2000	2600
	28	WY-12/7-C2	风冷	12	0.7	78	1225	6135AK-14	94	3685×1950×2000	3500
	29	WY-12/7-d1	风冷	12	0.7	73	990	Y280S-6	75	3005×1950×2000	3200
	30	WY-14/7-c1	风冷	14	0.7	90	1225	6135AZK	118	3685×1950×2000	3700
	31	WY-14/7-d	风冷	14	0.7	85	990	Y280M-6	90	3005×1950×2000	3350
	32	WY-17/7-c	风冷	18	0.7	112	1300	6135AZK	135	3640×1700×2150	3700

CNG压缩机主要产品一览表

序号 No:	进气压力 Inlet pressure Mpa	型号 Model	型式 Type	排气压力 Discharge pressure Mpa	压缩级数 Stage	供气量 Nm ³ /h Capacity	电机功率 kW power of motor	冷却方式 cool way
1		L-4.1/0.035-250		25	4	300	75	
2	0.035	L-5.5/0.035-250		25	4	400	110	
3		L-6.8/0.035-250		25	4	500	132	
4	0.056	L-3.1/0.56-250		25	4	270	75	
5		L-4.2/0.56-250		25	4	360	90	
6		L-4.6/0.56-250		25	4	400	110	
7		L-5.4/0.56-250		25	4	470	132	
8		L-6.6/0.56-250		25	4	533	160	
9		L-4.9/0.56-250		25	4	420	110	
10		L-9.4/0.56-250	L型级差式	25	4	800	200	水冷water
11		L-2.3/1-250	L-type stage different piston	25	4	255	75	
12		L-3.2/1-250		25	4	360	90	
13		L-3.9/1-250		25	4	420	110	
14	0.1	L-4.5/1-250		25	4	510	132	
15		L-5.5/1-250		25	4	610	160	
16		L-4.9/1-250		25	4	533	132	
17		L-7.3/1-250		25	4	800	200	
18		L-1.75/3-250		25	4	400	90	混冷water/air
19		L-2.5/3-250		25	4	515	110	水冷water
20	0.3	LF-1.75/3-250		25	4	400	90	风冷air
21		L-3.65/3-250		25	4	780	160	
22		D-1.75/3-250	D型级差式	25	4	400	90	水冷water
23		D-1.8/4-250	D-type stage different piston	25	4	500	90	
24	0.4	L-1.8/4-250	L型级差式 L-type stage different piston	25	4	500	90	混冷water/air
25	0.8	L-3.03/3-30	L型双作用 L-type double	3	2	1500	90	
26	1.0	L-1/10-250	L型级差式 L-type stage different piston	25	3	600	132	水冷water

压力容器主要产品一览表

压力容器及过滤器 Pressure vessel and filter			分离过滤储气罐 Gas tank for segregation and filtration		储气罐 Gas tank							
	单位		S-1/0.8	S-2/0.8	C-0.3/0.8	C-0.5/0.8	C-1/0.8	C-1/1.25	C-2/0.8	C-3/0.8	C-4/0.8	C-6/0.8
公称容积 Nominal cubage	m ³		1	2	0.3	0.5	0.5	1	2	3	4	6
工作介质 Working medium	空气		空气	空气	空气	空气	空气	空气	空气	空气	空气	空气
筒体内径D The inner diameter of Main body	mm		Φ800	Φ1000	Φ600	Φ700	Φ800	Φ800	Φ1000	Φ1200	Φ1200	Φ1600
筒体高度H Height of the main body	mm		1600	2200	1400	1400	1600	1600	2200	2200	3200	2600
设计压力 Designed pressure	MPa		0.88	0.88	0.88	0.88	0.88	1.44	0.84	0.88	0.88	0.88
工作压力 Working pressure	Mpa		0.8	0.8	0.8	0.8	0.8	1.25	0.8	0.8	0.8	0.8
设计温度 Designed temperature	℃		150	150	150	150	150	150	150	150	150	150
腐蚀裕量 Permissible corrosive space	mm		1	1	1	1	1	1	1	1	1	1
焊缝系数 Welding coefficient			0.85	0.85	0.85	0.85	0.85	0.85	0.85	0.85	0.85	0.85
净重 Net weight	Kg		510	1300	200	270	350	490	700	1023	1200	1800

若样本参数或图片与成品有差异,以成品为准。

LWJ-20/7型空气压缩机

LWJ-20/7 type Air Compressor



● 用途及适用范围 Application and usage

该压缩机主要为风动机械、风动工具提供稳定气源，广泛用于矿山开采、建筑施工、轻工建材、机械制造等行业，具有高效、节能、安全、可靠的特点。

The air compressor mainly provide the gas source for the pneumatic machine and tool of clean compressed air, and applicable for light industry, textile, constructive material, mechanical manufacturing and etc. Merits: high efficiency, energy saving, safety, and security.

● 主要技术参数 Main technical parameter

压缩机 Compressor

容积流量(Cubage flow) : 20 m³/min
 额定排气压力(Rated exhausting gas pressure) : 0.7 MPa
 转速(Rotational speed): 980 r/min
 轴功率(Power from the shaft) : < 103 KW
 气缸数×气缸直径(Nos of cylinders x diameter of cylinder): 1 × 380/1 × 250 mm
 重量(Weight) : 1950 kg
 外形尺寸(长×宽×高) (Overall dimensions (L × W × H): 2385 × 1525 × 2300 mm

电动机 Motor

型号(Type): YW110-6/560
 转速(Rotational speed): 980 r/min
 功率(Power): 110KW
 额定电压(Rated voltage): 380V

储气罐 Gas tank

C-20.8, 筒体直径(diameter of mainbody)Φ1000mm

启动器 Starter

XJ01-115

● 型式及特点 Pattern and characteristic

本机为L型、两列、两级、双作用、水冷、有十字头的固定式无基础往复活塞空气压缩机。该机只需放在硬质水平地面上接上储气罐即可使用，可为用户节约大量安装费用，同时可省去电机安装“对中”这一较为复杂的、技术性要求较高的过程。

This machine is of LV model, double-row, double-step, double-function, water-cooling, intercrossing, fixed, no basic reciprocating piston type air compressor. This machine does not need any mounting base, it is enough that you put the machine onto the hard ground and connect with gas tank, which it will save a great amount of cost for base construction, also it has avoid a technical trouble of coupling during the motor installation.

LWJ-22/7型空气压缩机

LWJ-22/7 type Air Compressor



● 用途及适用范围 *Application and usage*

该压缩机主要为风动机械、风动工具提供稳定气源，广泛用于矿山开采、建筑施工、轻工建材、机械制造等行业，具有高效、节能、安全、可靠的特点。

The air compressor mainly provide the gas source for the pneumatic machine and tool of clean compressed air, and applicable for light industry, textile, constructive material, mechanical manufacturing and etc. Merits: high efficiency, energy saving, safety, and security.

● 主要技术参数 *Main technical parameter*

压缩机 Compressor

容积流量(Cubage flow) : 22 m³/min
 额定排气压力(Rated exhausting gas pressure): 0.7 MPa
 转速(Rotational speed): 980 r/min
 轴功率(Power from the shaft): < 107 KW
 气缸数×气缸直径(Nos of cylinders × diameter of cylinder): 1 × 400/1 × 250 mm
 重量(Weight): 1950 kg
 外形尺寸(长×宽×高) (Overall dimensions (L × W × H): 2385 × 1525 × 2300 mm

电动机 Motor

型号(Type): YW110-6/560
 转速(Rotational speed): 980 r/min
 功率(Power): 110KW
 额定电压(Rated voltage): 380V

储气罐 Gas tank

C-2/0.8, 筒体直径(diameter of main body)Φ1000mm

启动器 Starter

XJ01-115

● 型式及特点 *Pattern and characteristic*

本机为L型、两列、两级、双作用、水冷、有十字头的固定式无基础往复式空气压缩机。该机只需放在硬质水平地面上接上储气罐即可使用，可为用户节约大量安装费用，同时可省去电机安装“对中”这一较为复杂的、技术性要求较高的过程。

This machine is of LV model, double-row, double-step, double-function, water-cooling, intercrossing, fixed, no basic reciprocating piston type air compressor. This machine does not need any mounting base, it is enough that you put the machine onto the hard ground and connect with gas tank, which it will save a great amount of cost for base construction, also it has avoid a technical trouble of coupling during the motor installation.

LWJ-14/7型空气压缩机

LWJ-14/7 type Air Compressor



● 用途及适用范围 Application and usage

该压缩机主要为风动机械、风动工具提供稳定气源，广泛用于矿山开采、建筑施工、轻工建材、机械制造等行业，具有高效、节能、安全、可靠的特点。

The air compressor mainly provide the gas source for the pneumatic machine and tool of clean compressed air, and applicable for light industry, textile, constructive material, mechanical manufacturing and etc. Merits: high efficiency, energy saving, safety, and security.

● 主要技术参数 Main technical parameter

压缩机 Compressor

容积流量(Cubage flow): 14 m³/min
 额定排气压力(Rated exhausting gas pressure): 0.7 MPa
 转速(Rotational speed): 980 r/min
 轴功率(Power from the shaft): < 72KW
 气缸数×气缸直径(Nos of cylinders × diameter of cylinder): 1×300/1×190 mm
 主机重量(Weight): 1860kg
 外形尺寸(长×宽×高)(Overall dimensions)(L×W×H): 2130×1220×1500mm

电动机 Motor

型号(Type): YW75-6/560
 转速(Rotational speed): 980 r/min
 功率(Power): 75KW
 额定电压(Rated voltage): 380V
储气罐 Gas tank
 C-1408, 筒体直径(diameter of main body)Φ800mm
启动器 Starter
 QXJ-75

● 型式及特点 Pattern and characteristic

本机为L型、两列、两级、双作用、水冷、有十字头的固定式无基础往复活塞空气压缩机。该机只需放在硬质水平地面上接上储气罐即可使用，可为用户节约大量安装费用，同时可省去电机安装“对中”这一较为复杂的、技术性要求较高的过程。

This machine is of LV model, double-row, double-step, double-function, water-cooling, intercrossing, fixed, no basic reciprocating piston type air compressor. This machine does not need any mounting base, it is enough that you put the machine onto the hard ground and connect with gas tank, which it will save a great amount of cost for base construction, also it has avoid a technical trouble of coupling during the motor installation.

LWJ-10/7型空气压缩机

LWJ-10/7 type Air Compressor



● 用途及适用范围 *Application and usage*

该压缩机主要为风动机械、风动工具提供稳定气源，广泛用于矿山开采、建筑施工、轻工建材、机械制造等行业，以及为工矿企业内使用压缩空气和带动风动工具、风动机械使用，具有高效、节能、安全、可靠的特点。

The air compressor mainly provide the stable gas source for the pneumatic machine and tool, and applicable for mineral exploitation, building construction, lighting material, mechanical manufacturing, traffic transportation, also it is used to serve for air compression, pneumatic tool and machine in mineral industrial factories. Merits: high efficiency, energy saving, safety, and security.

● 主要技术参数 *Main technical parameter*

压缩机 Compressor

容积流量(Cubage flow): 10 m³/min
 额定排气压力(Rated exhausting gas pressure): 0.7 MPa
 转速(Rotational speed): 980 r/min
 轴功率(Power from the shaft): < 52.5 KW
 气缸数×气缸直径(Nos of cylinders × diameter of cylinder): 1 × 275/1 × 170mm
 主机重量(Weight): 1500kg
 外形尺寸(长×宽×高) (Overall dimensions) (L × W × H): 1510 × 935 × 1640 mm

电动机 Motor

型号(Type): YKY-55-6
 转速(Rotational speed): 980 r/min
 功率(Power): 55KW
 额定电压(Rated voltage): 380V

储气罐 Gas tank

C-1/0.8, 筒体直径(diameter of main body) Φ800mm

启动器 Starter

QXJ-55

● 型式及特点 *Pattern and Character*

本机为L型、两列、两级、水冷的固定式往复式空气压缩机。该机不需设置任何基础，只需放在硬质水平地面接上储气罐即可使用，可为用户节约大量安装费用，同时可省去电机安装“对中”这一较为复杂的、技术性要求较高的过程。

This machine is of L model, double-row, double-step, water cooling, fixed reciprocating piston type air compressor. This machine does not need any mounting base, it is enough that you put the machine onto the hard ground and connect with gas tank, which it will save a great amount of cost for base construction, also it has avoid a technical trouble of coupling during the motor installation.

L-40/7型空气压缩机

L-40/7 type Air Compressor



● 用途及适用范围 *Application and usage*

该压缩机主要为风动机械、风动工具提供稳定气源，广泛用于矿山开采、建筑施工、轻工建材、机械制造等行业，具有高效、节能、安全、可靠的特点。

The air compressor mainly provide the gas source for the pneumatic machine and tool of clean compressed air, and applicable for light industry, textile, constructive material, mechanical manufacturing and etc. Merits: high efficiency, energy saving, safety, and security.

● 型式及特点 *Pattern and characteristic*

本机为L型、两列、两级、双作用、水冷、有十字头的固定式往复式空气压缩机。

This machine is of LV model, double-row, double-step, double-function, water-cooling, intercrossing, fixed, no basic reciprocating piston type air compressor.

● 主要技术参数 *Main technical parameter*

压缩机 Compressor

容积流量(Cubage flow) : 40 m³/min

额定排气压力(Rated exhausting gas pressure): 0.7 MPa

转速(Rotational speed): 980 r/min

轴功率(Power from the shaft): < 220 KW

气缸数 × 气缸直径(Nos of cylinders × diameter of cylinderr): 1 × 580; 1 × 340 mm

主机重量(Weight): 3500 kg

外形尺寸(长 × 宽 × 高) (TOverall dimensions

(L × W × H): 3500 × 2700 × 1800 mm

电动机 Motor

型号(Type): Y355L-6

转速(Rotational speed): 980 r/min

轴功率(Power from the shaft): < 250kW

额定电压(Rated voltage): 380V

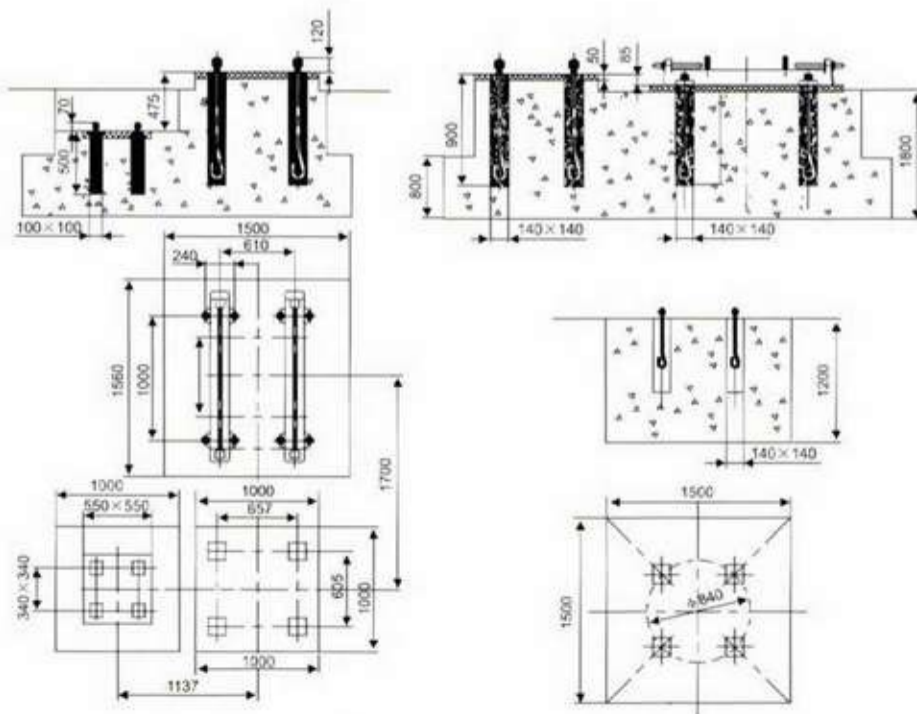
储气罐 Gas tank

C-8/0.8, 筒体直径(diameter of main body): φ 1600mm

启动器 Starter

XJ01-250

● 基础图 *Basic picture*



L-20/7型空气压缩机 L-20/7 type Air Compressor



● 用途及适用范围 *Application and usage*

该压缩机主要为风动机械、风动工具提供稳定气源，广泛用于矿山开采、建筑施工、轻工建材、机械制造等行业，具有高效、节能、安全、可靠的特点。

The air compressor mainly provide the gas source for the pneumatic machine and tool of clean compressed air, and applicable for light industry, textile, constructive material, mechanical manufacturing and etc. Merits: high efficiency, energy saving, safety, and security.

● 型式及特点 *Pattern and characteristic*

本机为L型、两列、两级、双作用、水冷、有十字头的固定式往复式空气压缩机。

This machine is of LV model, double-row, double-step, double-function, water-cooling, intercrossing, fixed, no basic reciprocating piston type air compressor.

● 主要技术参数 *Main technical parameter*

压缩机 Compressor

容积流量(Cubage flow) : 20 m³/min

额定排气压力(Rated exhausting gas pressure): 0.7 MPa

转速(Rotational speed): 980 r/min

轴功率(Power from the shaft): ≤ 103 KW

气缸数 × 气缸直径(Nos of cylinders × diameter of cylinderr): 1 × 380/1 × 240 mm

主机重量(Weight): 2300 kg

外形尺寸(长 × 宽 × 高) (TOverall dimensions (L × W × H): 2385 × 2510 × 1700 mm

电动机 Motor

型号(Type): Y315S-6

转速(Rotational speed): 980 r/min

功率(Power): 110KW

额定电压(Rated voltage): 380V

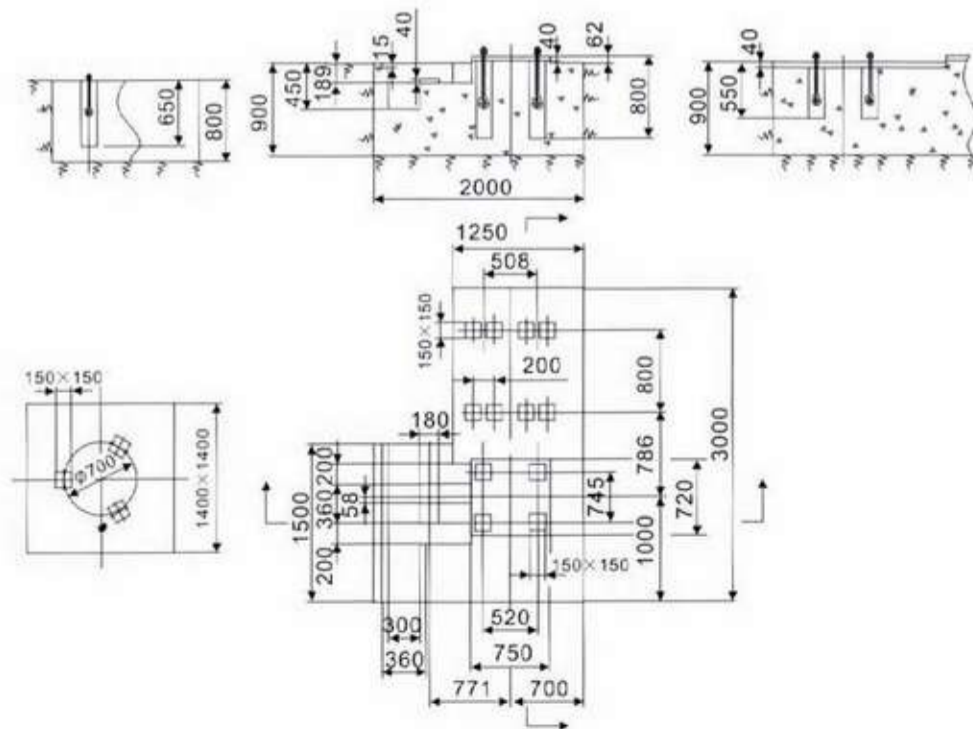
储气罐 Gas tank

C-2/0.8, 筒体直径(diameter of main body) Φ1000mm

启动器 Starter

XJ01-115

● 基础图 *Basic picture*





L-14/7型空气压缩机

L-14/7 type Air Compressor

● 用途及适用范围 *Application and usage*

该压缩机主要为风动机械、风动工具提供稳定气源，广泛用于矿山开采、建筑施工、轻工建材、机械制造等行业，具有高效、节能、安全、可靠的特点。

The air compressor mainly provide the gas source for the pneumatic machine and tool of clean compressed air, and applicable for light industry, textile, constructive material, mechanical manufacturing and etc. Merits: high efficiency, energy saving, safety, and security.

● 型式及特点 *Pattern and characteristic*

本机为L型、两列、两级、双作用、水冷、有十字头的固定式往复活塞空气压缩机。

This machine is of LV model, double-row, double-step, double-function, water-cooling, intercrossing, fixed, no basic reciprocating piston type air compressor.

● 主要技术参数 *Main technical parameter*

压缩机 Compressor

容积流量(Cubage flow): 14 m³/min

额定排气压力(Rated exhausting gas pressure): 0.7 MPa

转速(Rotational speed): 980 r/min

轴功率(Power from the shaft): < 72 kW

气缸数 × 气缸直径(Nos of cylinders × diameter of cylinder):

1 × 300/1 × 190 mm

主机重量(Weight): 1300 kg

外形尺寸(长 × 宽 × 高)(Overall dimensions

(L × W × H): 1550 × 855 × 1300 mm

电动机 Motor

型号(Type): Y280S-6

转速(Rotational speed): 980 r/min

功率(Power): 75KW

额定电压(Rated voltage): 380V

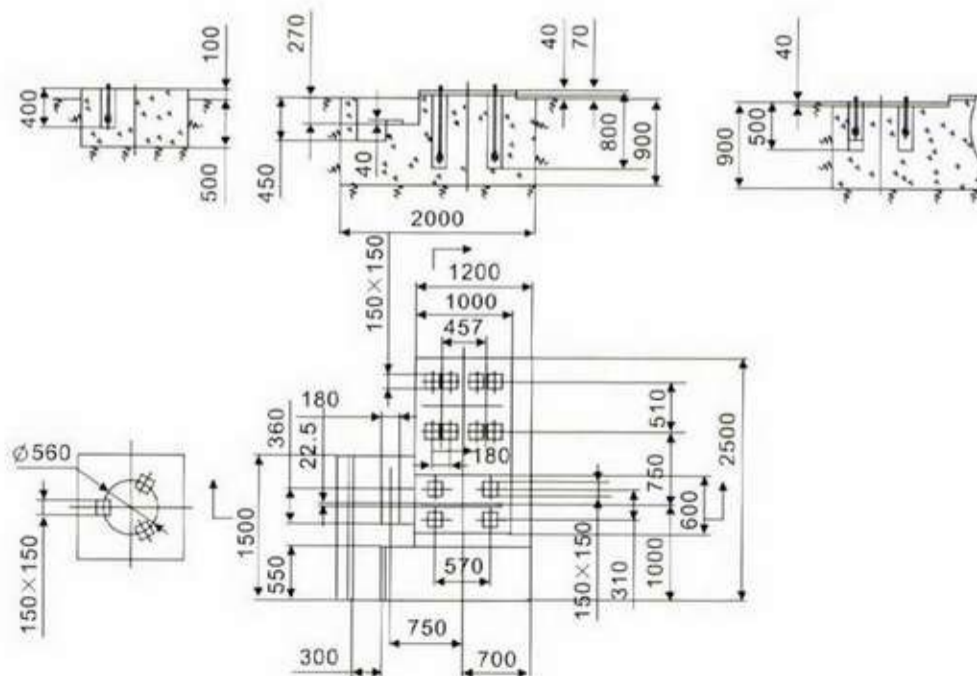
储气罐 Gas tank

C-1/0.8, 筒体直径(diameter of main body) Φ800mm

启动器 Starter

QXJ-75

● 基础图 *Basic picture*



L-10/7 型空气压缩机

L-10/7 type Air Compressor



● 用途及适用范围 Application and usage

该压缩机主要为风动机械、风动工具提供稳定气源，广泛用于矿山开采、建筑施工、轻工建材、机械制造等行业，具有高效、节能、安全、可靠的特点。

The air compressor mainly provide the gas source for the pneumatic machine and tool of clean compressed air, and applicable for light industry, textile, constructive material, mechanical manufacturing and etc. Merits: high efficiency, energy saving, safety, and security.

● 型式及特点 Pattern and characteristic

本机为L型、两列、两级、双作用、水冷、有十字头的固定式往复式空气压缩机。

This machine is of LV model, double-row, double-step, double-function, water-cooling, intercrossing, fixed, no basic reciprocating piston type air compressor.

● 主要技术参数 Main technical parameter

压缩机 Compressor

容积流量(Cubage flow) : 10 m³/min

额定排气压力(Rated exhausting gas pressure): 0.7 Mpa

转速(Rotational speed): 980 r/min

轴功率(Power from the shaft): < 51.5 KW

气缸数 × 气缸直径(Nos of cylinders × diameter of cylinder):

1 × 275/1 × 170 mm

主机重量(Weight): 1500 kg

外形尺寸(长 × 宽 × 高) (Overall dimensions

(L × W × H): 2050 × 1910 × 1500 mm

电动机 Motor

型号(Type): Y280M-6

转速(Rotational speed): 980 r/min

功率(Power): 55KW

额定电压(Rated voltage): 380V

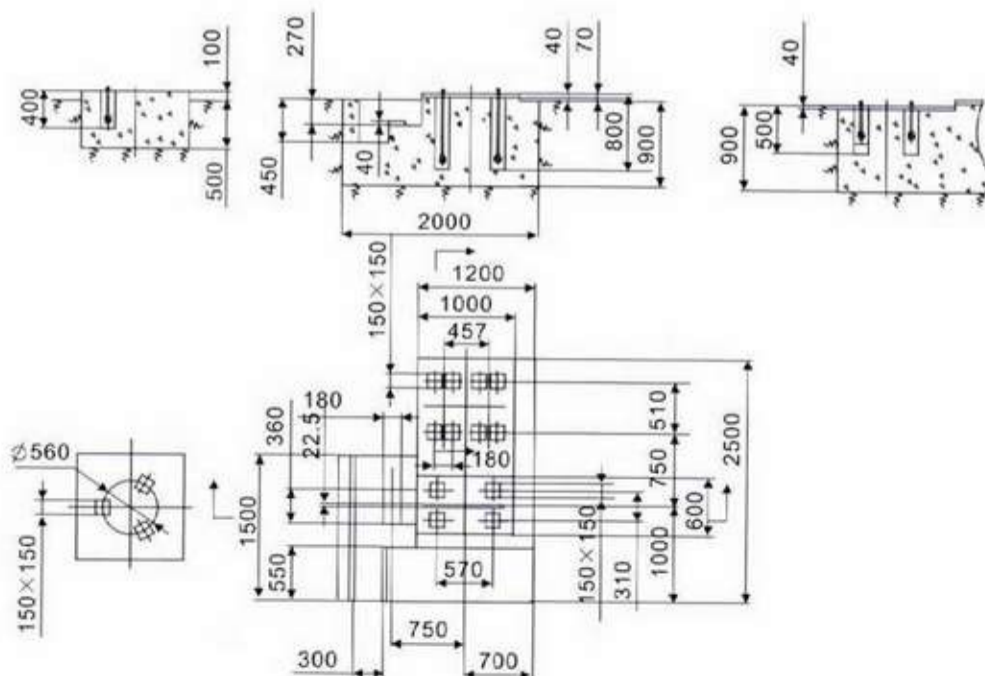
储气罐 Gas tank

C-1/0.8, 筒体直径(diameter of main body) Φ800mm

启动器 Starter

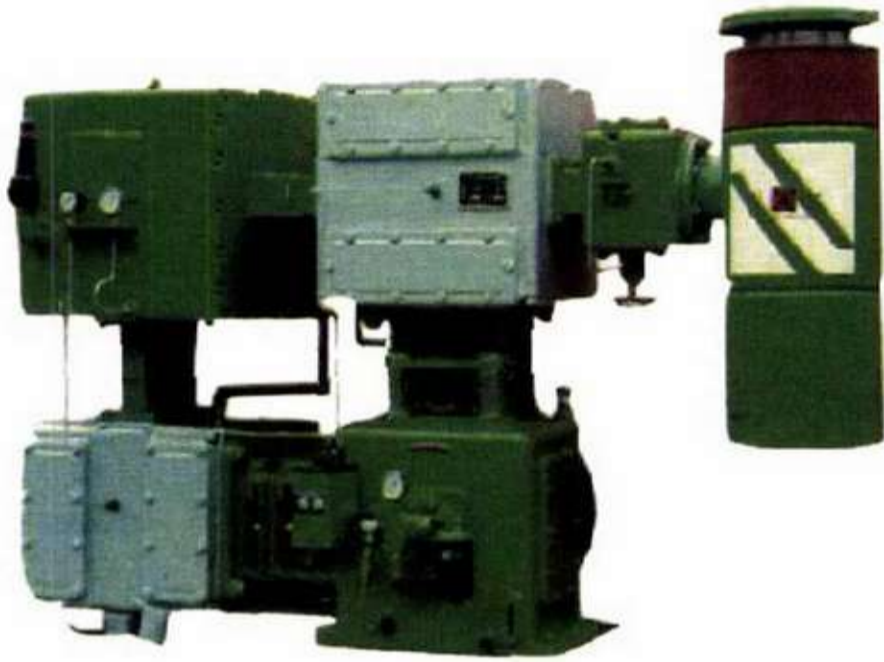
QXJ-55

● 基础图 Basic picture



LW-10/7-a型空气压缩机

LW-10/7-a type Air Compressor



● 用途及适用范围 Application and usage

该压缩机主要为需要洁净压缩空气的风动机械、风动工具提供稳定气源，广泛用于矿山开采、建筑施工、轻工建材、机械制造等行业，具有高效、节能、安全、可靠的特点。

The air compressor mainly provide the gas source for the pneumatic machine and tool of clean compressed air, and applicable for light industry, textile, constructive material, mechanical manufacturing and etc. Merits: high efficiency, energy saving, safety, and security.

● 型式及特点 Pattern and characteristic

本机为L型、两列、两级、双作用、水冷、有十字头的固定式无油润滑往复活塞空气压缩机。

This machine is of LV model, double-row, double-step, double-function, water-cooling, intercrossing, fixed, no basic reciprocating piston type air compressor.

● 主要技术参数 Main technical parameter

压缩机 Compressor

容积流量(Cubage flow) : 10 m³/min

额定排气压力(Rated exhausting gas pressure) : 0.7 MPa

转速(Rotational speed) : 740 r/min

轴功率(Power from the shaft) : < 56 KW

气缸数×气缸直径(Nos of cylinders × diameter of cylinder) : 1×300/1×190 mm

重量(Weight) : 1500 kg

外形尺寸(长×宽×高)(Overall dimensions)

(L×W×H) : 2950×1910×1800 mm

电动机 Motor

型号(Type) : Y280M₂-8(IP44)

转速(Rotational speed) : 740 r/min

功率(Power) : 65KW

额定电压(Rated voltage) : 380V

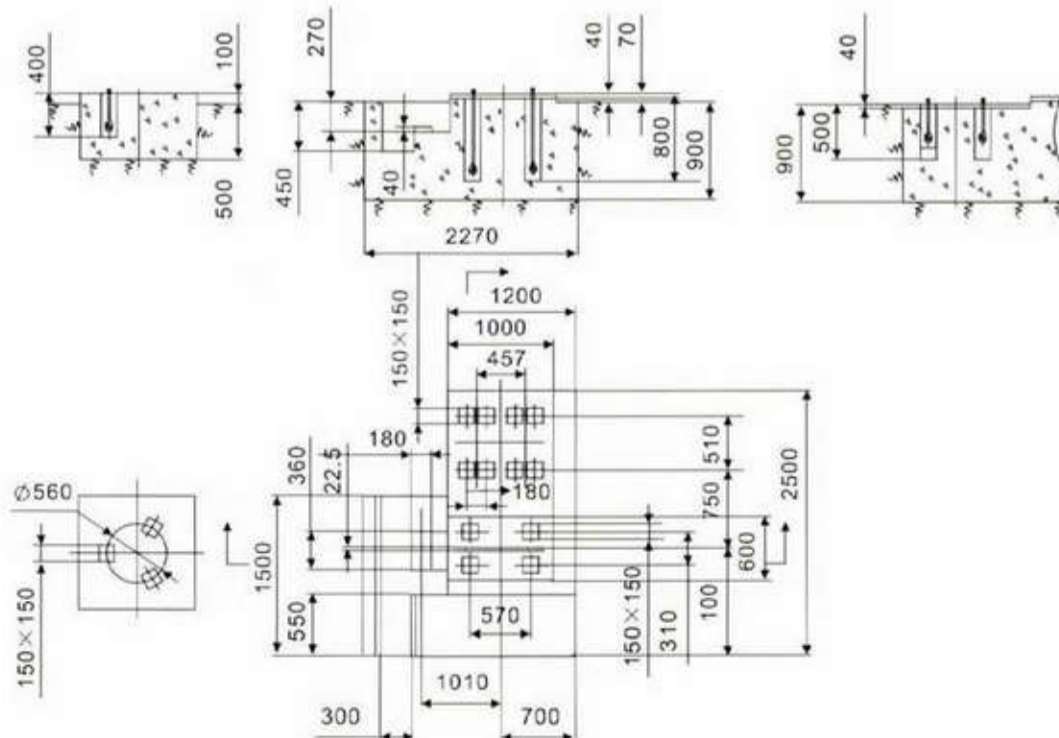
储气罐 Gas tank

C-1/0.8, 筒体直径(diameter of main body) Φ800mm

启动器 Starter

QXJ-75

● 基础图 Basic picture





V-6/7型空气压缩机

V-6/7 type Air Compressor



● 用途及适用范围 *Application and usage*

该压缩机主要为风动机械、风动工具提供稳定气源，广泛用于矿山开采、建筑施工、轻工建材、机械制造等行业，以及为工矿企业内使用压缩空气和带动风动工具、风动机械使用，具有高效、节能、安全、可靠的特点。

The air compressor mainly provide the stable gas source for the pneumatic machine and tool, and applicable for mineral exploitation, building construction, lighting material, mechanical manufacturing, traffic transportation, also it is used to serve for air compression, pneumatic tool and machine in mineral industrial factories. Merits: high efficiency, energy saving, safety, and security.

● 型式及特点 *Pattern and Character*

本机型为V型两列、两级、水冷的固定式往复式活塞空气压缩机。

This machine V-6/7 is of V model, double-row, double-step, water cooling, fixed reciprocating piston type air compressor.

电动机 Motor

型号(Type): Y250M-6

转速(Rotational speed): 980 r/min

功率(Power): 37Kw

额定电压(Rated voltage): 380V

储气罐 Gas tank

C-0.5/0.8, 筒体直径(diameter of main body) Φ 700mm

启动器 Starter

QXJ-45

● 主要技术参数 *Main technical parameter*

压缩机 Compressor

容积流量(Cubage flow): 6 m³/min

额定排气压力(Rated exhausting gas pressure): 0.7 MPa

转速(Rotational speed): 980 r/min

轴功率(Power from the shaft): \leq 35 kW

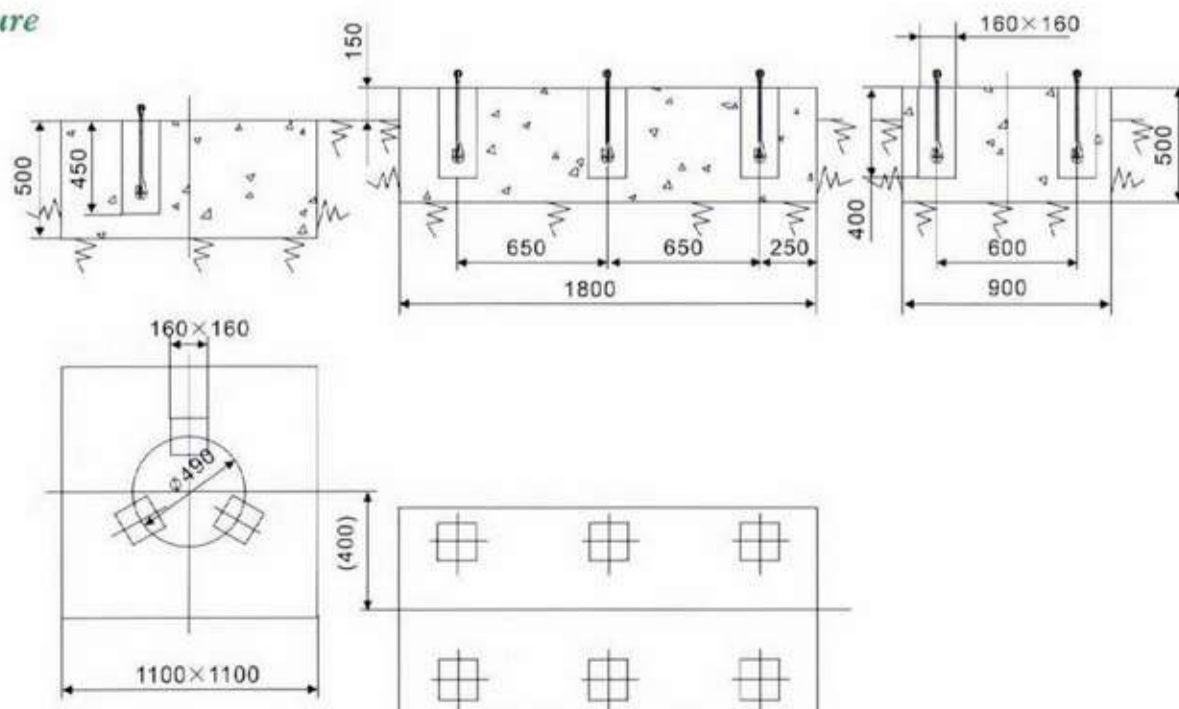
气缸数 \times 气缸直径(Nos of cylinders \times diameter of cylinder): 2 \times 210/2 \times 125mm

重量(Weight): 1800kg

外形尺寸(长 \times 宽 \times 高)(Overall dimensions)

(L \times W \times H): 1800 \times 1400 \times 1300 mm

● 基础图 *Basic picture*





VF-6/7型空气压缩机 VF-6/7 type Air Compressor



● 用途及适用范围 *Application and usage*

该压缩机主要为风动机械、风动工具提供稳定气源，广泛用于矿山开采、建筑施工、轻工建材、机械制造等行业，以及为工矿企业内使用压缩空气和带动风动工具、风动机械使用，具有高效、节能、安全、可靠的特点。

The air compressor mainly provide the stable gas source for the pneumatic machine and tool, and applicable for mineral exploitation, building construction, lighting material, mechanical manufacturing, traffic transportation, also it is used to serve for air compression, pneumatic tool and machine in mineral industrial factories. Merits: high efficiency, energy saving, safety, and security.

● 型式及特点 *Pattern and Character*

本机为V型、两列、两级、风冷的固定式往复活塞空气压缩机。
This machine VF-6/7 is of V model, double-row, double-step, wind cooling, fixed reciprocating piston type air compressor.

● 主要技术参数 *Main technical parameter*

压缩机 Compressor

容积流量(Cubage flow):	6 m ³ /min
额定排气压力(Rated exhausting gas pressure):	0.7 MPa
转速(Rotational speed):	980 r/min
轴功率(Power from the shaft):	< 35 kW
气缸数×气缸直径(Nos of cylinders × diameter of cylinder):	2 × 210/2 × 125mm
重量(Weight):	1800kg
外形尺寸(长×宽×高)(Overall dimensions)(L × W × H):	2270 × 1230 × 1200 mm

电动机 Motor

型号(Type):	Y250M-6
转速(Rotational speed):	980 r/min
功率(Power):	37 kW

额定电压(Rated voltage): 380V

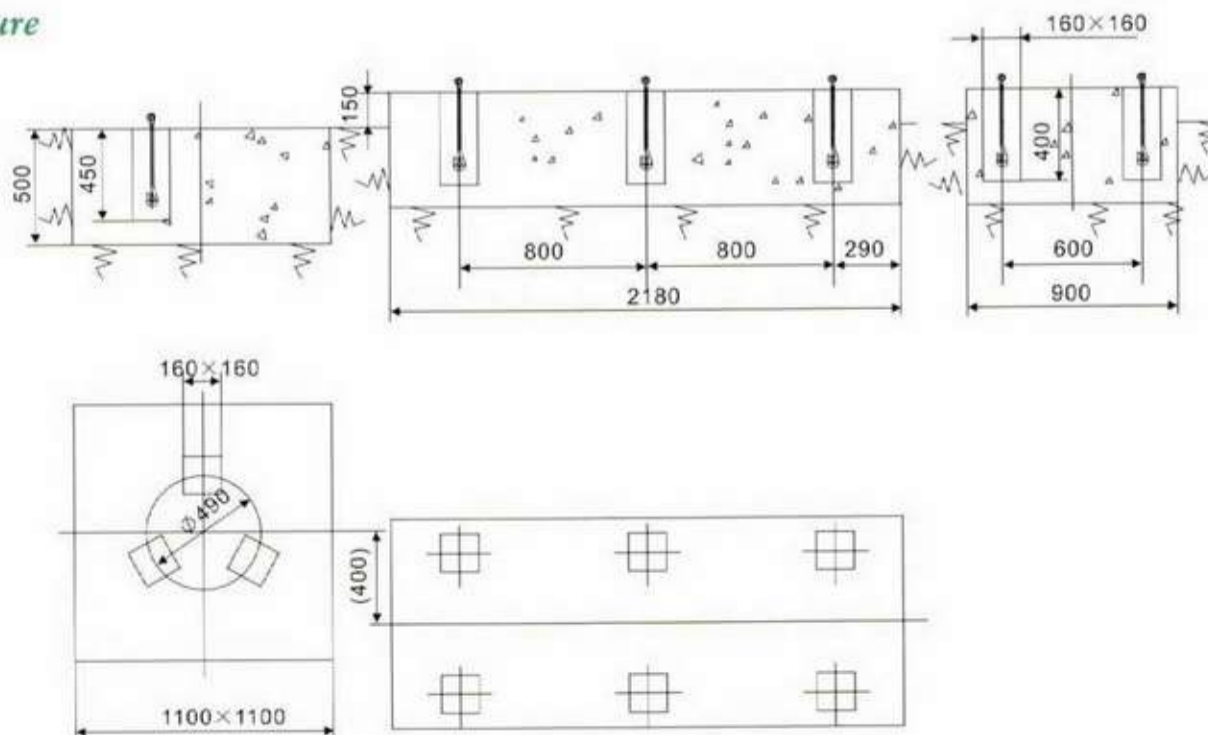
储气罐 Gas tank

C-0.5/0.8, 筒体直径(diameter of main body) Φ700mm

启动器 Starter

QXJ-45

● 基础图 *Basic picture*





V-3/7型空气压缩机

V-3/7 type Air Compressor

● 用途及适用范围 *Application and usage*

该压缩机主要为风动机械、风动工具提供稳定气源，广泛用于矿山开采、建筑施工、轻工建材、机械制造等行业，以及为工矿企业内使用压缩空气和带动风动工具、风动机械使用，具有高效、节能、安全、可靠的特点。

This compressor offers the source of the gas of stabilizing for pneumatic machinery, pneumatic tool mainly, used in the trades, such as mine exploiting, construction, light industry building materials, machine-building, etc. extensively, and in order to use compress the air and drive the pneumatic tool, pneumatic machinery to using in the industrial and mining enterprises, have high-efficient, energy-conservation, safe, reliable characteristic.

● 型式及特点 *Pattern and Character*

本机型为V型、两列、两级、水冷的固定式往复式活塞空气压缩机。空压机储气罐一体化，安装使用方便、省时。

This machine V-3/7 is of V model, double-row, double-step, water cooling, fixed reciprocating piston type air compressor. Air compressor is integrated with gas tank, easy, convenient to mount and operate.

电动机 *Motor*

型号(Type): Y200L1-6

功率(Power): 18.5KW

转速(Rotational speed): 970 r/min

额定电压(Rated voltage): 380V

储气罐 *Gas tank*

型号: V-3/7-85-0, 筒体直径(diameter of main body) $\Phi 400$ mm

启动器 *Starter*

QXJ-25

● 主要技术参数 *Main technical parameter*

压缩机 *Compressor*

容积流量(Cubage flow): $3 \text{ m}^3/\text{min}$

转速(Rotational speed): 970 r/min

额定排气压力(Rated exhausting gas pressure): 0.7 MPa

轴功率(Power from the shaft): $< 17.5 \text{ kW}$

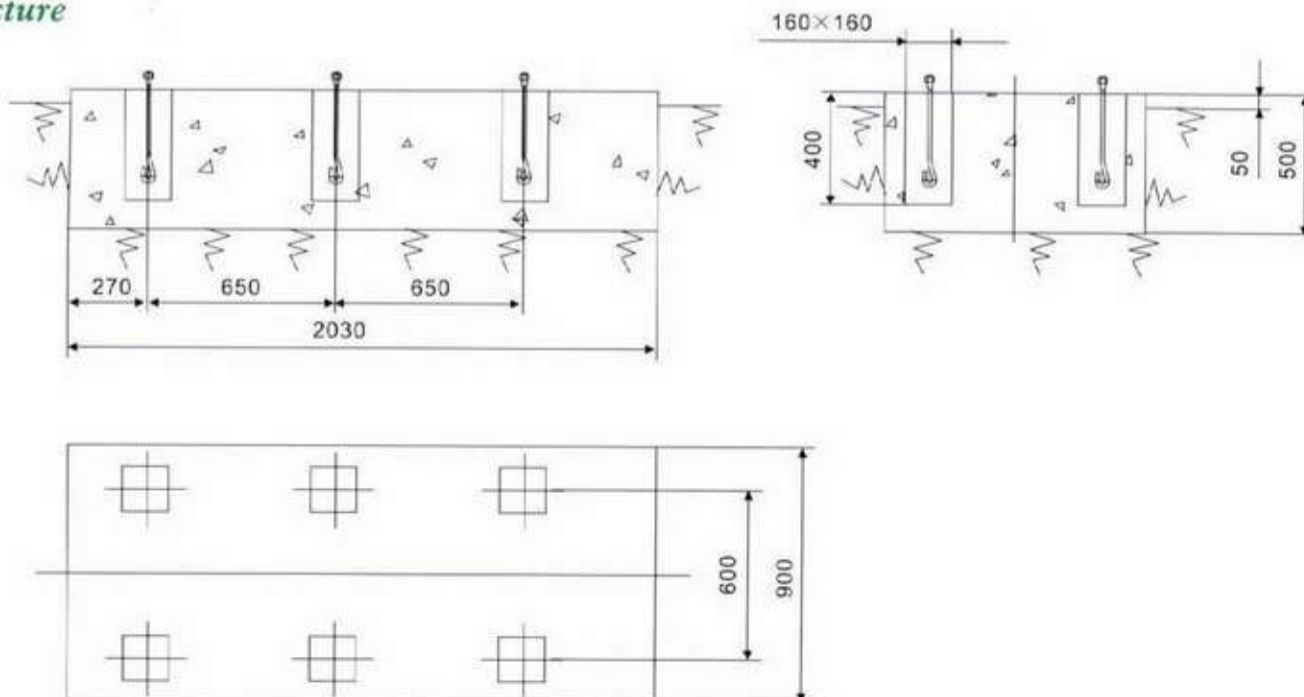
气缸数 \times 气缸直径(Nos of cylinders \times diameter of cylinder): $1 \times 210/1 \times 125 \text{ mm}$

重量(Weight): 1080kg

外形尺寸(长 \times 宽 \times 高)(Overall dimensions)

(L \times W \times H): $1845 \times 1330 \times 1100 \text{ mm}$

● 基础图 *Basic picture*



VF-3/7型空气压缩机

VF-3/7 type Air Compressor



● 用途及适用范围 Application and usage

该压缩机主要为风动机械、风动工具提供稳定气源，广泛用于矿山开采、建筑施工、轻工建材、机械制造等行业，以及为工矿企业内使用压缩空气和带动风动工具、风动机械使用，具有高效、节能、安全、可靠的特点。

The air compressor mainly provide the stable gas source for the pneumatic machine and tool, and applicable for mineral exploitation, building construction, lighting material, mechanical manufacturing, traffic transportation, also it is used to serve for air compression, pneumatic tool and machine in mineral industrial factories. Merits: high efficiency, energy saving, safety, and security.

● 型式及特点 Pattern and Character

本机型为V型、两列、两级、风冷的固定式往复活塞空气压缩机。空压机与储气罐一体化。安装、使用、方便、省时。

This machine Vf-3/7 is of V model, double-row, double-step, wind cooling, fixed reciprocating piston type air compressor. Air compressor is integrated with gas tank, easy, convenient to mount and operate.

电动机 Motor

型号 (Type): Y200L1-6

转速 (Rotational speed): 970 r/min

功率 (Power): 18.5 kW

额定电压 (Rated voltage): 380V

储气罐 Gas tank

V-3/7-85-0, 筒体直径 (diameter of main body) Φ 400mm

启动器 Starter

QXJ-25

● 主要技术参数 Main technical parameter

压缩机 Compressor

容积流量 (Cubage flow): 3 m³/min

额定排气压力 (Rated exhausting gas pressure): 0.7 MPa

转速 (Rotational speed): 970 r/min

轴功率 (Power from the shaft): < 18 kW

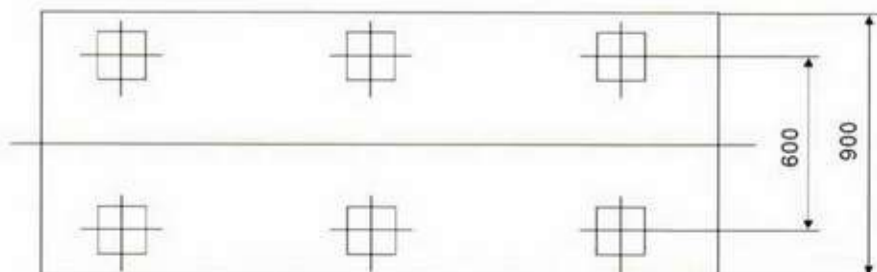
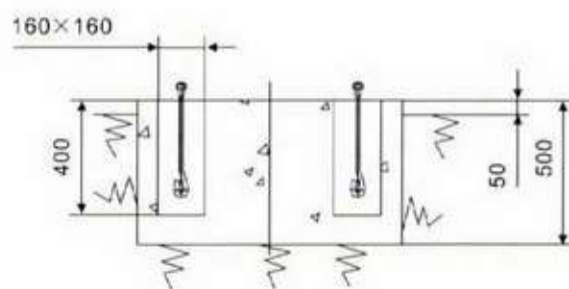
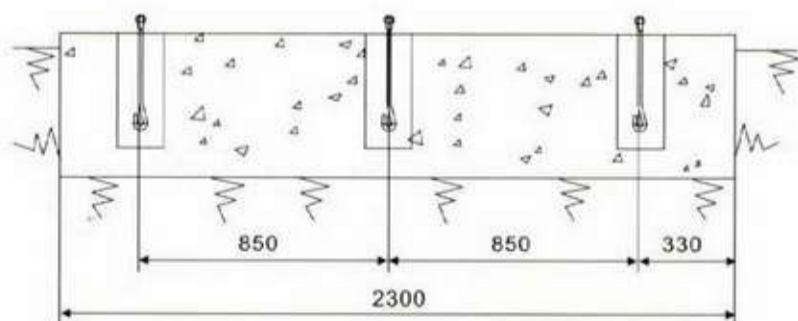
气缸数 × 气缸直径 (Nos of cylinders × diameter of cylinder): 1 × 210/1 × 125mm

重量 (Weight): 1100kg

外形尺寸 (长 × 宽 × 高) (Overall dimensions)

(L × W × H): 2170 × 1330 × 1230 mm

● 基础图 Basic picture



VY-6/8-d1型空气压缩机

VY-6/8-d1 type Air Compressor

● 用途及适用范围 Application and usage

该压缩机主要为风动机械、风动工具提供稳定气源，广泛用于矿山开采、建筑施工、轻工建材、机械制造等行业，以及为工矿企业内使用压缩空气和带动风动工具、风动机械使用，具有高效、节能、安全、可靠的特点。

The air compressor mainly provide the stable gas source for the pneumatic machine and tool, and applicable for mineral exploitation, building construction, lighting material, mechanical manufacturing, traffic transportation, also it is used to serve for air compression, pneumatic tool and machine in mineral industrial factories. Merits: high efficiency, energy saving, safety, and security.

● 型式及特点 Pattern and Character

本机为V型、两级、风冷的移动式往复活塞空气压缩机，配有四个供牵移的轮胎，可随意移动，使用十分方便。

This machine is of V model, double-row, double-step, wind cooling, fixed reciprocating piston type air compressor. Four wheels are installed for moving freely.

VY-9/7-c3型空气压缩机

VY-9/7-c3 type Air Compressor

● 用途及适用范围 Application and usage

该压缩机主要为风动机械、风动工具提供稳定气源，广泛用于矿山开采、建筑施工、轻工建材、机械制造等行业，以及为工矿企业内使用压缩空气和带动风动工具、风动机械使用，具有高效、节能、安全、可靠的特点。

The air compressor mainly provide the stable gas source for the pneumatic machine and tool, and applicable for mineral exploitation, building construction, lighting material, mechanical manufacturing, traffic transportation, also it is used to serve for air compression, pneumatic tool and machine in mineral industrial factories. Merits: high efficiency, energy saving, safety, and security.

● 型式及特点 Pattern and Character

本机为V型、四列、两级、风冷的移动式往复活塞空气压缩机，配有四个供牵移的轮胎，可随意移动，使用十分方便。

This machine is of V model, double-row, double-step, wind cooling, fixed reciprocating piston type air compressor. Four wheels are installed for moving freely.



● 主要技术参数 Main technical parameter

压缩机 Compressor

容积流量(Cubage flow): 6 m³/min
 额定排气压力(Rated exhausting gas pressure): 0.8 MPa
 转速(Rotational speed): 980 r/min
 轴功率(Power from the shaft): < 37 KW
 气缸数×气缸直径(Nos of cylinders × diameter of cylinder): 2×210/2×125mm
 重量(Weight): 2500 kg
 外形尺寸(长×宽×高)(Overall dimensions)(L×W×H): 2900×1900×2100 mm

电动机 Motor

型号(Type): Y280S-6
 转速(Rotational speed): 980 r/min
 功率(Power): 45KW
 额定电压(Rated voltage): 380V

储气罐 Gas tank

车架式气罐 Frame type gas pitcher

启动器 Starter

QXJ-45Y



● 主要技术参数 Main technical parameter

压缩机 Compressor

容积流量(Cubage flow): 9 m³/min
 额定排气压力(Rated exhausting gas pressure): 0.7 MPa
 转速(Rotational speed): 1350 r/min
 轴功率(Power from the shaft): < 53 KW
 气缸数×气缸直径(Nos of cylinders × diameter of cylinder): 2×230/2×140mm
 主机重量(Weight): 2000kg
 外形尺寸(长×宽×高)(Overall dimensions)(L×W×H): 3300×1950×2000 mm

柴油机 Diesel engine

型号(Type): 4135AK-4
 转速(Rotational speed): 1350 r/min
 功率(Power): 65KW

储气罐 Gas tank

车架式气罐 Frame type gas pitcher



VY-9/7-d型空气压缩机

VY-9/7-d type Air Compressor

● 用途及适用范围 Application and usage

该压缩机主要为风动机械、风动工具提供稳定气源，广泛用于矿山开采、建筑施工、轻工建材、机械制造等行业，以及为工矿企业内使用压缩空气和带动风动工具、风动机械使用，具有高效、节能、安全、可靠的特点。

The air compressor mainly provide the stable gas source for the pneumatic machine and tool, and applicable for mineral exploitation, building construction, lighting material, mechanical manufacturing, traffic transportation, also it is used to serve for air compression, pneumatic tool and machine in mineral industrial factories. Merits: high efficiency, energy saving, safety, and security.

● 主要技术参数 Main technical parameter

压缩机 Compressor

容积流量(Cubage flow): 9 m³/min

额定排气压力(Rated exhausting gas pressure): 0.7 MPa

转速(Rotational speed): 980 r/min

轴功率(Power from the shaft): < 53 KW

气缸数×气缸直径(Nos of cylinders × diameter of cylinder): 2×230/2×140mm

重量(Weight): 2500kg

外形尺寸(长×宽×高)(Overall dimensions)

(L×W×H): 2650×1800×2000 mm

电动机 Motor

型号(Type): Y280M-6

转速(Rotational speed): 980 r/min

功率(Power): 55KW

额定电压(Rated voltage): 380V

储气罐 Gas tank

车架式气罐 Frame type gas pitcher

启动器 Starter

QXJ-55Y

● 型式及特点 Pattern and Character

本机为V型、四列、两级、风冷的移动式往复活塞空气压缩机，配有四个供牵移的轮胎，可随意移动，使用十分方便。

This machine is of V model, double-row, double-step, wind cooling, fixed reciprocating piston type air compressor. Four wheels are installed for moving freely.



WY-12/7-c2型空气压缩机

WY-12/7-c2 type Air Compressor

● 用途及适用范围 Application and usage

该压缩机主要为风动机械、风动工具提供稳定气源，广泛用于矿山开采、建筑施工、机械制造、交通运输等行业，以及为工矿企业内使用压缩空气和带动风动工具、风动机械使用，该机为柴油机驱动，具有方便在无电源的地区使用的特点。

The air compressor mainly provide the stable gas source for the pneumatic machine and tool, and applicable for mineral exploitation, building construction, mechanical manufacturing, traffic transportation, also it is used to serve for air compression, pneumatic tool and machine in mineral industrial factories. This machine is driven by diesel oil, and convenient in working the place where there has no electrical power supply.

● 主要技术参数 Main technical parameter

压缩机 Compressor

容积流量(Cubage flow): 12 m³/min

额定排气压力(Rated exhausting gas pressure): 0.7 Mpa

转速(Rotational speed): 1225 r/min

轴功率(Power from the shaft): < 74 KW

气缸数×气缸直径(Nos of cylinders × diameter of cylinder): 4×230/2×190mm

重量(Weight): 3500kg

外形尺寸(长×宽×高)(Overall dimensions)

(L×W×H): 3685×1950×2000 mm

柴油机 Diesel engine

型号(Type): 6135AK-14

转速(Rotational speed): 1350 r/min

功率(Power): 94KW

储气罐 Gas tank

车架式气罐 Frame type gas pitcher

● 型式及特点 Pattern and Character

本机为W型、六列、两级、风冷的移动式往复活塞空气压缩机，配有四个供牵移的轮胎，可随意移动，使用十分方便。

This machine is of W model, double-row, double-step, wind cooling, fixed reciprocating piston type air compressor. Four wheels are installed for moving freely.



WY-12/7-d型空气压缩机 WY-12/7-d type Air Compressor

● 用途及适用范围 *Application and usage*

该压缩机主要为风动机械、风动工具提供稳定气源，广泛用于矿山开采、建筑施工、轻工建材、机械制造等行业，以及为工矿企业内使用压缩空气和带动风动工具、风动机械使用，具有高效、节能、安全、可靠的特点。

The air compressor mainly provide the stable gas source for the pneumatic machine and tool, and applicable for mineral exploitation, building construction, lighting material, mechanical manufacturing, traffic transportation, also it is used to serve for air compression, pneumatic tool and machine in mineral industrial factories. Merits: high efficiency, energy saving, safety, and security.

● 主要技术参数 *Main technical parameter*

压缩机 Compressor

容积流量(Cubage flow): 12 m³/min

额定排气压力(Rated exhausting gas pressure): 0.7 MPa

转速(Rotational speed): 990 r/min

轴功率(Power from the shaft): < 73 KW

气缸数×气缸直径(Nos of cylinders × diameter of cylinder): 4 × 230/2 × 190mm

重量(Weight): 1000 kg

外形尺寸(长×宽×高) Overall dimensions (L × W × H): 3005 × 1950 × 2000 mm

电动机 Motor

型号(Type): Y280S-6 (IP23)

转速(Rotational speed): 990 r/min

功率(Power): 75Kw

额定电压(Rated voltage): 380V

储气罐 Gas tank

车架式气罐 Frame type gas pitcher

启动器 Starter

QXJ-75

● 型式及特点 *Pattern and Character*

本机为W型、六列、两级、风冷的移动式往复活塞空气压缩机，配有四个供牵移的轮胎，可随意移动，使用十分方便。

This machine is of W model, double-row, double-step, wind cooling, fixed reciprocating piston type air compressor. Four wheels are installed for moving freely.



WY-14/7-C1型空气压缩机 14/7-C1 type Air Compressor

● 用途及适用范围 *Application and usage*

该压缩机主要为风动机械、风动工具提供稳定气源，广泛用于矿山开采、建筑施工、机械制造、交通运输等行业，以及为工矿企业内使用压缩空气和带动风动工具、风动机械使用，该机为柴油机驱动，具有方便在无电源的地区使用的特点。

The air compressor mainly provide the stable gas source for the pneumatic machine and tool, and applicable for mineral exploitation, building construction, mechanical manufacturing, traffic transportation, also it is used to serve for air compression, pneumatic tool and machine in mineral industrial factories. This machine is driven by diesel oil, and convenient in working the place where there has no electrical power supply.

● 型式及特点 *Pattern and Character*

本机为W型、六列、两级、风冷的移动式往复活塞空气压缩机，配有四个供牵移的轮胎，可随意移动，使用十分方便。

This machine is of W model, double-row, double-step, wind cooling, fixed reciprocating piston type air compressor. Four wheels are installed for moving freely.

● 主要技术参数 *Main technical parameter*

压缩机 Compressor

容积流量(Cubage flow): 14 m³/min

额定排气压力(Rated exhausting gas pressure): 0.7 Mpa

转速(Rotational speed): 1225 r/min

轴功率(Power from the shaft): < 85.4 KW

气缸数×气缸直径(Nos of cylinders × diameter of cylinder): 4 × 230/2 × 190mm

重量(Weight): 3700kg

外形尺寸(长×宽×高) (Overall dimensions) (L × W × H): 3685 × 1950 × 2000 mm

柴油机 Diesel engine

型号(Type): 6135AZK

转速(Rotational speed): 1350 r/min

功率(Power): 135Kw

储气罐 Gas tank

车架式气罐 Frame type gas pitcher

WY-14/7-d型空气压缩机

WY-14/7-d type Air Compressor



● 用途及适用范围 Application and usage

该压缩机主要为风动机械、风动工具提供稳定气源，广泛用于矿山开采、建筑施工、轻工建材、机械制造等行业，以及为工矿企业内使用压缩空气和带动风动工具、风动机械使用，具有高效、节能、安全、可靠的特点。

The air compressor mainly provide the stable gas source for the pneumatic machine and tool, and applicable for mineral exploitation, building construction, lighting material, mechanical manufacturing, traffic transportation, also it is used to serve for air compression, pneumatic tool and machine in mineral industrial factories. Merits: high efficiency, energy saving, safety, and security.

● 型式及特点 Pattern and Character

本机为W型、六列、两级、风冷的移动式往复活塞空气压缩机，配有四个供牵移的轮胎，可随意移动，使用十分方便。

This machine is of W model, double-row, double-step, wind cooling, fixed reciprocating piston type air compressor. Four wheels are installed for moving freely.

● 主要技术参数 Main technical parameter

压缩机 Compressor

容积流量(Cubage flow): 14m³/min

额定排气压力(Rated exhausting gas pressure): 0.7 MPa

转速(Rotational speed): 990 r/min

轴功率(Power from the shaft): 85 KW

气缸数×气缸直径(Nos of cylinders × diameter of cylinder): 4 × 230/2 × 190mm

重量(Weight): 1000 kg

外形尺寸(长×宽×高)(Overall dimesions)

(L × W × H): 3005 × 1950 × 2000 mm

电动机 Motor

型号(Type): Y315M-6

转速(Rotational speed): 990 r/min

功率(Power): 90Kw

额定电压(Rated voltage): 380V

储气罐 Gas tank

车架式气罐 Frame type gas pitcher

启动器 Starter

QXJ-100

L系列CNG压缩机 Serise L CNG Compressor



L-2.5/3 - 250型CNG压缩机
Model L-2.5/3 - 250 CNG Compressor

● 用途及适用范围 *Application and usage*

L系列CNG压缩机是在我公司传统优质产品——方缸动力压缩机的基础上，针对CNG加气站的使用特点，与西安交通大学联合设计开发出来的新产品。该机继承了原型机工作可靠、工艺成熟的优点，又采用了独特的径向平面浮动活塞、氟橡胶高压密封圈等新技术，确保整机技术处于国内先进水平。完善的PLC控制或继电器控制能满足不同层次的用户需要。

山川牌CNG压缩机具有三大突出优点：

- 1、电耗低，从而保证加气站的运行成本低；
- 2、体积小，重量轻，维修方便；
- 3、吸气压力范围广，能适应各种不同的城市天然气供气管网压力，尤其能满足低管网压力地区的加气站需要。

This article is jointly developed by our company and Xian University of Communication on the basis of our traditional square cylinder compressor according to CNG charging station operation conditions. Having merits of said machine, this machine adopts unique radial plane floating piston and fluorine rubber high pressure sealing ring so that it becomes the most advanced at home. Perfect PLC control and relay unit meet different applications.

Shanchuan Brand CNG compressor has following advantages and merits.

1. Low energy consumption makes low operation cost.
2. Small size, light weight and easy maintenance.
3. It is suitable for different natural gas supply network systems due to its wide scope of suction pressure.

其它介质压缩机

注：氮、氢及二氧化碳等压缩机（参数可按用户需求确定）

混凝土喷射机

型号	生产能力 m ³ /h	最大骨 料粒径 mm	工作风压 MPa	耗风量 m ³ /min	输料管 内径mm	上料高度 m	最大输送距离m	电机 Kw	整机重量 Kg	外形尺寸mm
Type	Production capacity (m ³ /h)	Max hard particle diameter (mm)	Working wind pressure (Mpa)	Wind consumption (m ³ /min)	Lose to anticipate the path inside the tube	Inner dia of input pipeLifting head (m)	Max transmission distance (m)	Motor power (KW)	Total weight (kg)	Overall size (mm)
PZY-5	5	20	0.2-0.4	7—8	50	1.1	水平 <200 垂直 <30	5.5	650	1250 × 720 × 960
PZY-7	7	20	0.3-0.5	7—9	65	1.2	水平 <200 垂直 <30	5.5	700	1250 × 720 × 1050

强有力的售后服务体系 Completed Service System

技术服务：

无论售前、售中、售后，只要用户需求设备技术上的帮助和咨询，本公司将在24小时内予以无偿提供有关技术资料。现场开机调试成功后， 我公司的售后服务工程师负责对用户的操作人员进行常规的操作培训。在质保期内， 接到用户设备发生故障的通报， 公司直接派售后服务工程师24~72小时内到达现场， 企业的诚信服务深得用户好评！

Technology service:

It is a pleasure for our company to help our customers, no problem to solve all the equipment and technology relevant problem within 24hours, no matter you under which stage; before, after or during your buying, all the consultation and services are free of charge. After trial operation is successful, our after sales engineers will also be responsible for giving regular training to your operators. During our guarantee day, if your equipment have some breakdown problem, our office will directly send someone to your door within 24 ~72hours. We have established a nationwide sales and service net of 29 offices and more than 200 distributors. We are popular among our customers for our sincere service.

自贡山川 網易暖通 co-163-com

编后语

本手册汇集了山川公司生产的部分产品，由于时间仓促，疏漏之处在所难免，敬请见谅、指正！如有不明之处，本公司有关工程技术人员随时为您解答，并竭诚为您服务。衷心希望本手册能给您带来方便，鉴于本手册中所涉及的标准、技术要求及各种尺寸，随着技术改进和时间的推移都在不断地发展变化，因此，我们保留修改权，如有更改恕不另行通知！

Editorial afterword

This hand book has been gathered SHANCHUAN Company. As time is hurried, it is difficult to avoid careless omission, please excuse us and make a comment! If there are not clear, the relevant engineers and technicians of our company answer for you at any time, we are willing to serve you whole heartedly. Hope these copies of handbook bring to convenient you. The standard, specification requirement and sizes involved in the handbook are changing as technology improves and lapse of time. So, we reserve power of amendment, if alter, forgive us for not issuing a separate notice!



自贡山川气体压缩机有限公司

ZIGONG SHANCHUAN GAS COMPRESSOR CO., LTD.

(原自贡空压机总厂)

地址：四川省自贡市贡井区贡雷路79号

电话：0813-3301600 3307999

传真：0813-3302973

网址：www.zgsc.com.cn

邮箱：zgsc@zgsc.com.cn zgeng@163.com

邮编：643020